



GAT MONTHLY MEMBERSHIP PROGRESS REPORT

Results as of: 6/30/2023

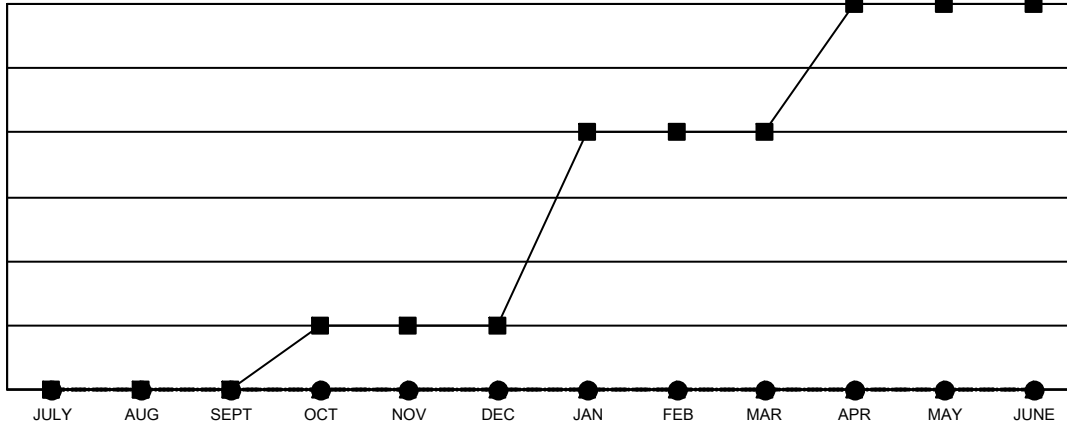
Multiple District 24

LOCATION: VIRGINIA

| Clubs | | | |
|-----------------------|---------------|-----------|---------------|
| RESULTS FOR 2022-2023 | | | |
| QUARTER | NEW CLUB GOAL | NEW CLUBS | DROPPED CLUBS |
| JULY/AUG/SEPT | 0 | 0 | 1 |
| OCT/NOV/DEC | 1 | 0 | 4 |
| JAN/FEB/MAR | 3 | 0 | 0 |
| APR/MAY/JUNE | 2 | 0 | 10 |

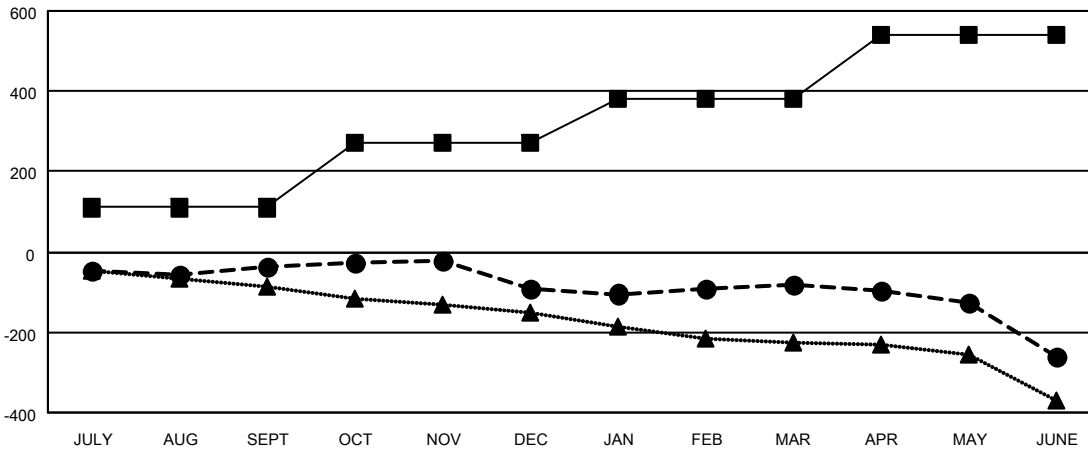
| Members | | | |
|-----------------------|------------------------|----------------------|--|
| RESULTS FOR 2022-2023 | | | |
| QUARTER | MEMBER GROWTH NET GOAL | MEMBER GROWTH ACTUAL | DROPPED MEMBERS ACTUAL (including transfers) |
| JULY/AUG/SEPT | 110 | 146 | 164 |
| OCT/NOV/DEC | 160 | 145 | 188 |
| JAN/FEB/MAR | 110 | 189 | 156 |
| APR/MAY/JUNE | 160 | 146 | 308 |

GOALS AND ACTUAL NEW CLUBS CUMULATIVE



- - CURRENT YEAR GOALS FOR NEW CLUBS
- - CURRENT YEAR ACTUAL NEW CLUBS
- ▲ - LAST YEAR ACTUAL NEW CLUBS

GOALS AND ACTUAL MEMBERS CUMULATIVE



- - MEMBER GROWTH NET GOAL
- - MEMBER GROWTH ACTUAL
- ▲ - LAST YEAR MEMBERSHIP ACTUAL

| | | |
|------------------------|---|--|
| DROPPED CLUBS: 15 | 143 CLUBS OF 234 ADDED 1 OR MORE NEW MEMBERS | GENDER DISTRIBUTION |
| DROPPED MEMBERS | CLICK HERE FOR CUMULATIVE MEMBERSHIP DATA | MALE 3,337 (62.58%) |
| DECEASED 124 | | FEMALE 1,995 (37.42%) |
| CLUB CANCELLED 106 | | NON BINARY 0 (0.00%) |
| OTHER 586 | | PREFER NOT TO ANSWER 0 (0.00%) |
| TOTAL 816 | | TOTAL FAMILY UNIT MEMBERS 909 |
| | | FAMILY MEMBERS PAYING HALF DUES 458 |